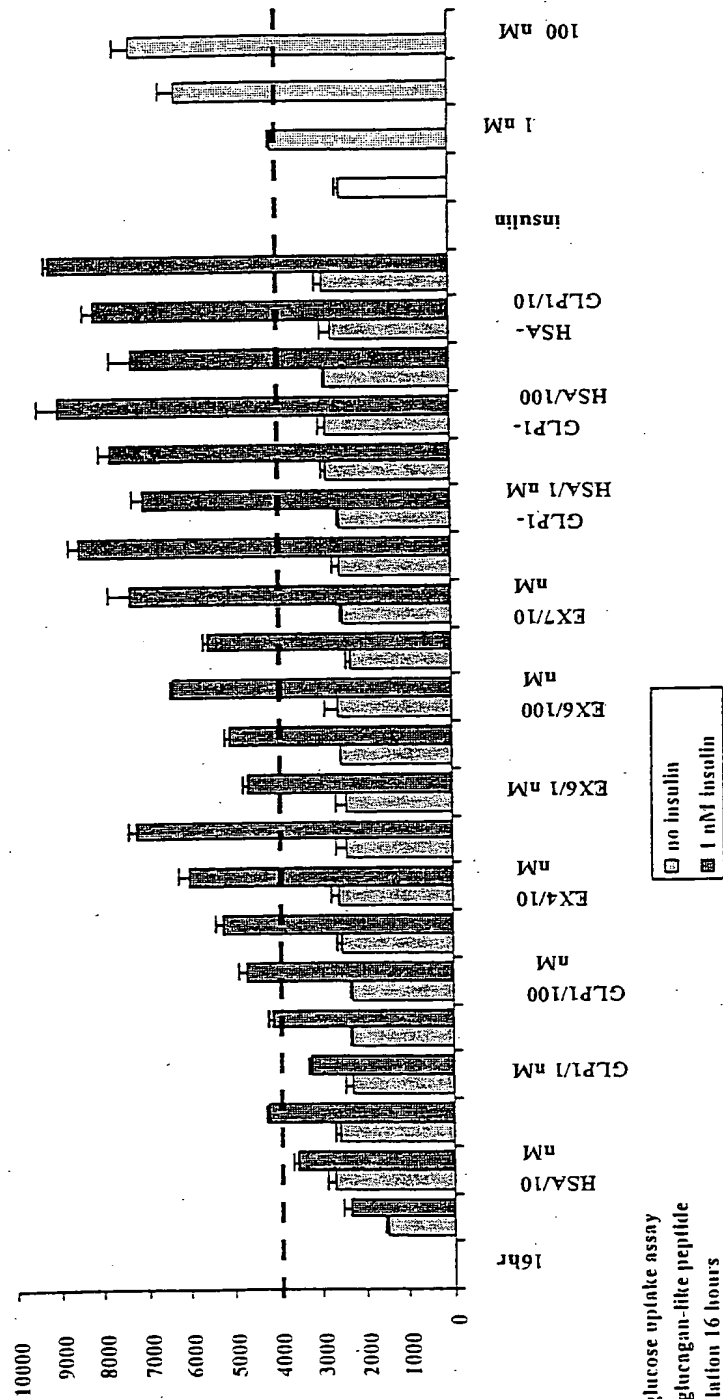


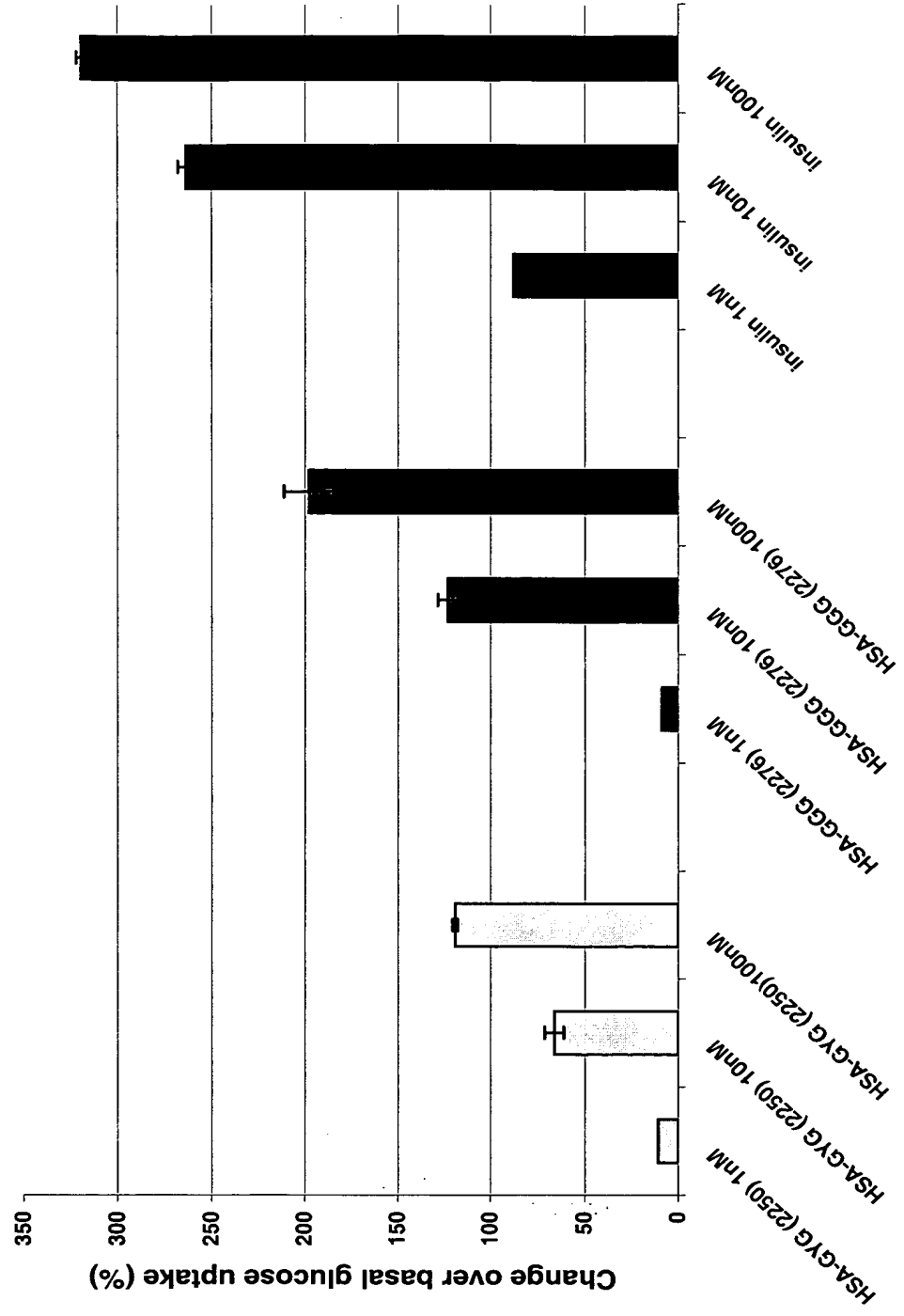
Testing Exendin4-HSA & GLP-1-HSA proteins in 3T3L1 Adipocytes
(Stimulation 16 hours)



*[3H] glucose uptake assay
*GLP-1: glucagon-like peptide
*Stimulation 16 hours

Figure 1

FIGURE 2
Glucose uptake in 3T3 L1 adipocytes



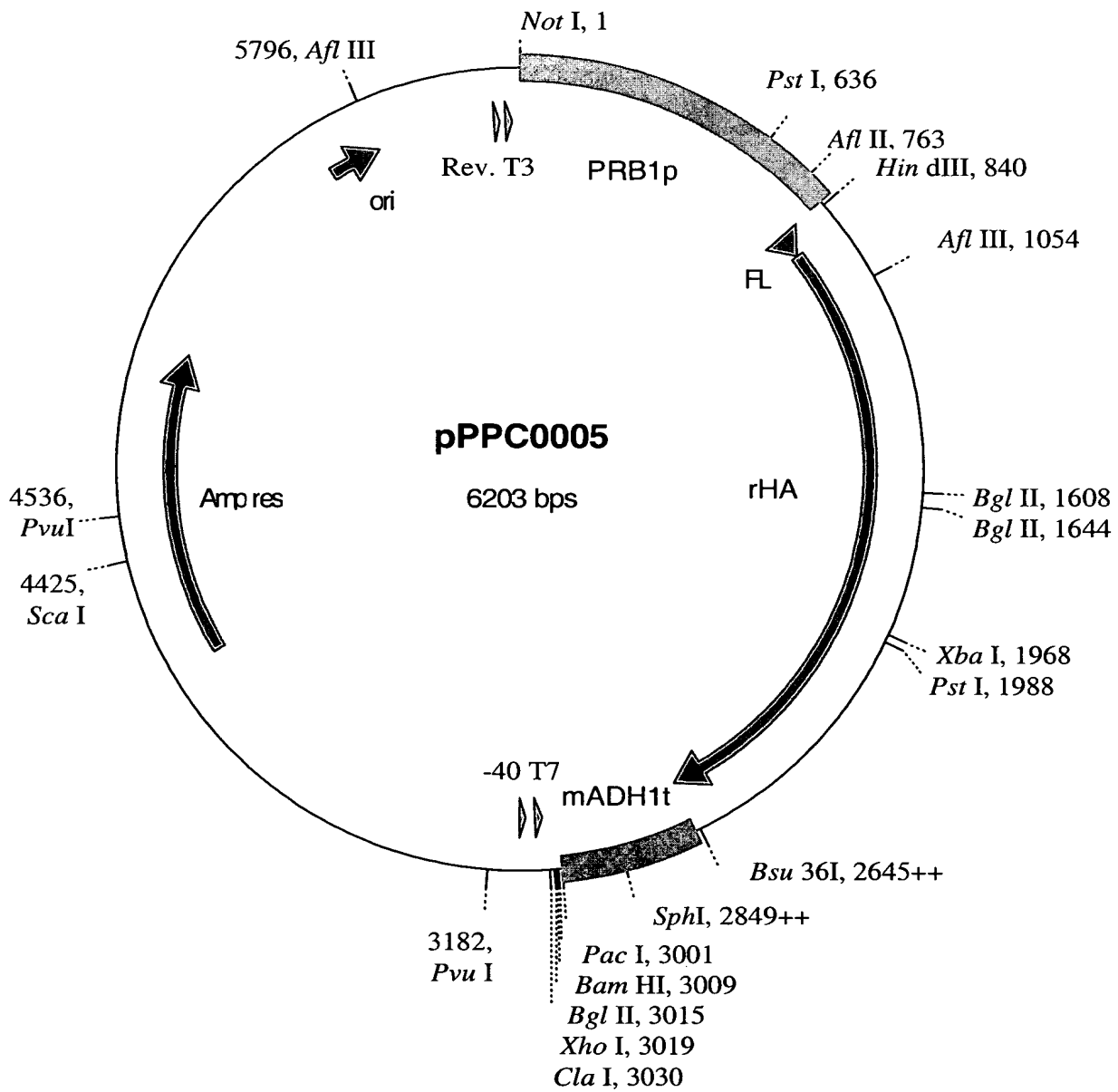


Figure 3

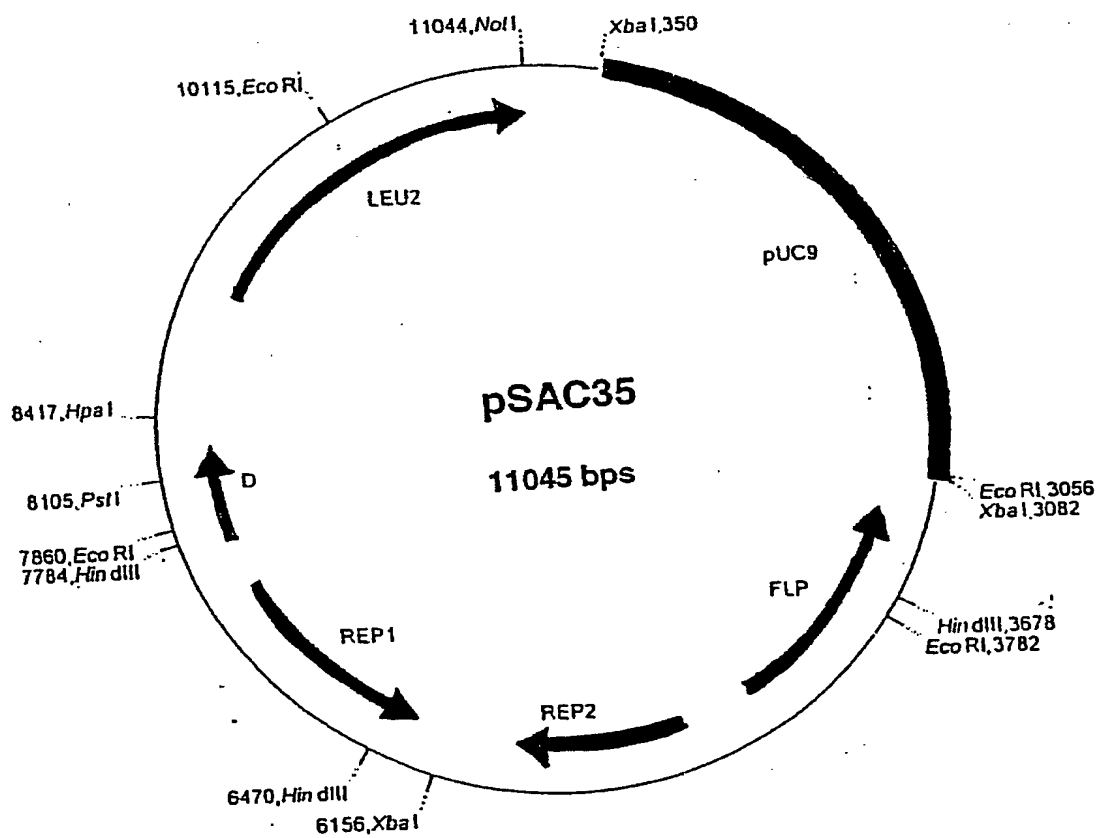


Figure 4

1 GAT GCA CAC AAG AGT GAG GTT GCT CAT CCG TTT AAA GAT TTG GGA GAA AAT TTC AAA 60
1 D A H K S E V A H R F K D L G E E N F K 20

61 GCC TTG GTG TTG ATT GCC TTT GCT CAG TAT CTT CAG CAG TGT CCA TTT GAA GAT CAT GTA 120
21 A L V L I A F A Q Y L Q C P F E D H V 40

121 AAA TTA GTG AAT GAA GTA ACT GAA TTT GCA AAA ACA TGT GTT GCT GAT GAG TCA GCT GAA 180
41 K L V N E V T E F A K T C V A D E S A E 60

181 AAT TGT GAC AAA TCA CTT CAT ACC CTT TTT GGA GAC AAA TTA TGC ACA GTT GCA ACT CTT 240
61 N C D K S L H T L F G D K L C T V A T L 80

241 CGT GAA ACC TAT GGT GAA ATG GCT GAC TGC TGT GCA AAA CAA GAA CCT GAG AGA AAT GAA 300
81 R E T Y G E M A D C C A K Q E P E R N E 100

301 TGC TTC TTG CAA CAC AAA GAT GAC AAC CCA AAC CTC CCC CGA TTG GTG AGA CCA GAG GTT 360
101 C F L Q H K D D N P N L P R L V R P E V 120

361 GAT GTG ATG TGC ACT GCT TTT CAT GAC AAT GAA GAG ACA TTT TTG AAA AAA TAC TTA TAT 420
121 D V M C T A F H D N E E T F L K K Y L Y 140

421 GAA ATT GCC AGA AGA CAT CCT TAC TTT TAT GCC CCG GAA CTC CTT TTC TTT GCT AAA AGG 480
141 E I A R R H P Y F Y A P E L L F F A K R 160

Figure 5A

481 TAT AAA GCT GCT TTT ACA GAA TGT TGC CAA GCT GCT GAT AAA GCT GCC TGC CTG TTG CCA 540
 161 Y K A A F T E C C Q A A D K A A C L L P 180

541 AAG CTC GAT GAA CTT CGG GAT GAA GGG AAG GCT TCG TCT GCC AAA CAG AGA CTC AAA TGT 600
 181 K L D E L R D E G K A S S A K Q R L K C 200

601 GCC AGT CTC CAA AAA TTT GGA GAA AGA GCT TTC AAA GCA TGG GCA GTG GCT CGC CTG AGC 660
 201 A S L Q K F G E R A F K A W A V A R L S 220

661 CAG AGA TTT CCC AAA GCT GAG TTT GCA GAA GTT TCC AAG TTA GTG ACA GAT CTT ACC AAA 720
 221 Q R F P K A E F A E V S K L V T D L T K 240

721 GTC CAC ACG GAA TGC TGC CAT GGA GAT CTG CTT GAA TGT GCT GAT GAC AGG GCG GAC CTT 780
 241 V H T E C C H G D L L E C A D D R A D L 260

781 GCC AAG TAT ATC TGT GAA AAT CAG GAT TCG ATC TCC AGT AAA CTG AAG GAA TGC TGT GAA 840
 261 A K Y I C E N Q D S I S S K L K E C C E 280

841 AAA CCT CTG TTG GAA AAA TCC CAC TGC ATT GCC GAA GTG GAA AAT GAT GAG ATG CCT GCT 900
 281 K P L L E K S H C I A E V E N D E M P A 300

901 GAC TTG CCT TCA TTA GCT GCT GAT TTT GTT GAA AGT AAG GAT GTT TGC AAA AAC TAT GCT 960
 301 D L P S L A A D F V E S K D V C K N Y A 320

Figure 5B

1441 TTG GTG AAC AGG CGA CCA TGC TTT TCA GCT CTG GAA GTC GAT GAA ACA TAC GTT CCC AAA 1500
481 L V N R R P C F S A L E V D E T Y V P K 500

1501 GAG TTT AAT GCT GAA ACA TTC ACC TTC CAT GCA GAT ATA TGC ACA CTT TCT GAG AAG GAG 1560
501 E F N A E T F T F H A D I C T L S E K E 520

1561 AGA CAA ATC AAG AAA CAA ACT GCA CTT GTT GAG CTT GTG AAA CAC AAG CCC AAG GCA ACA 1620
521 R Q I K K Q T A L V E L V K H K P K A T 540

1621 AAA GAG CAA CTG AAA GCT GTT ATG GAT GAT TTC GCA GCT TTT GTA GAG AAG TGC TGC AAG 1680
541 K E Q L K A V M D D F A A F V E K C C K 560

1681 GCT GAC GAT AAG GAG ACC TGC TTT GCC GAG GGT AAA AAA CTT GTT GCT GCA AGT CAA 1740
561 A D D K E T C F A E E G K K L V A A S Q 580

1741 GCT GCC TTA GGC TTA TAA CAT CTA CAT TTA AAA GCA TCT CAG 1782
581 A A L G L * 585

Figure 5D

Dose response of IFN β albumin fusion proteins

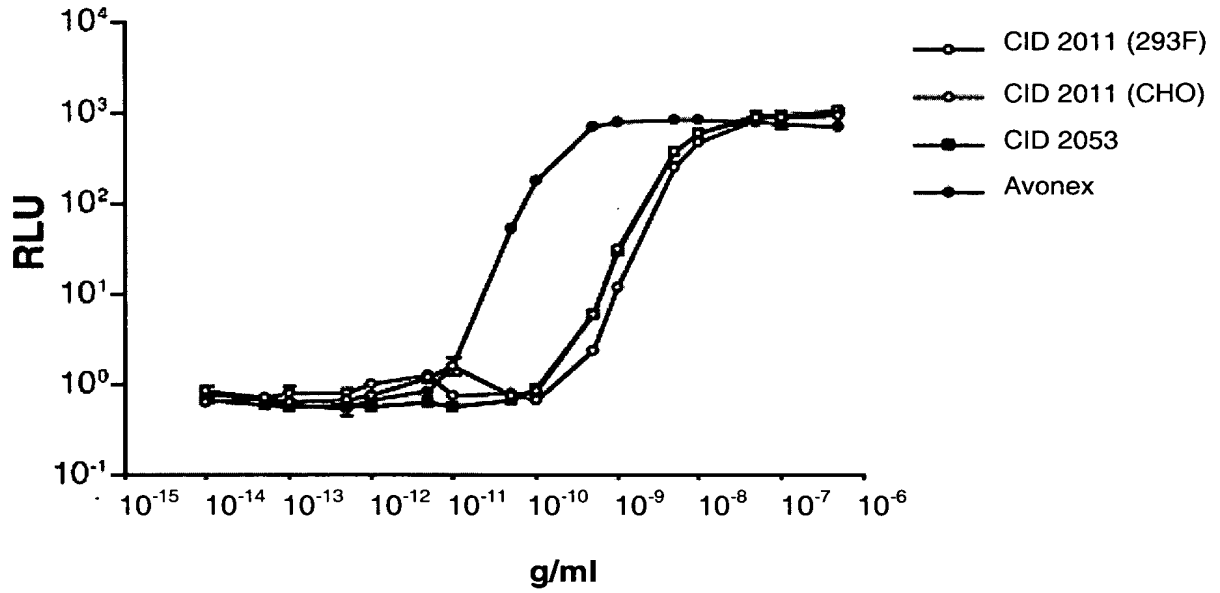


Figure 6

Expression of insulin mRNA in INS-1 (832/13) cells

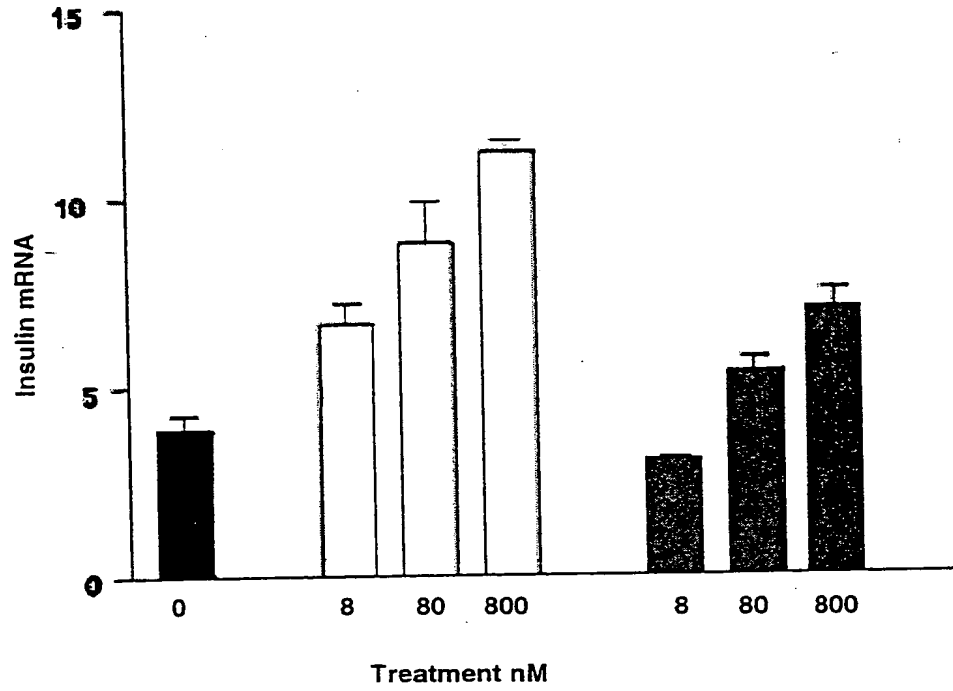


Figure 7

Inhibition of proliferation of HS294T melanoma cells
by IFN α albumin fusion protein

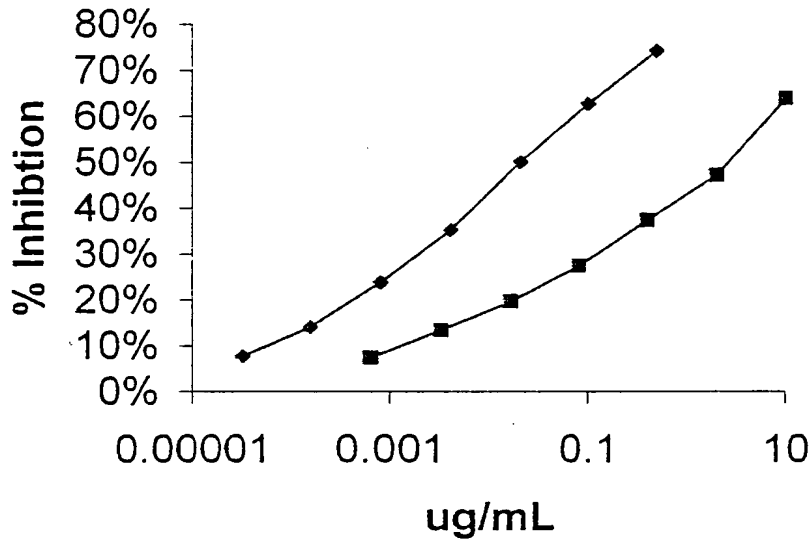


Figure 8

**SEAP activation with IFN α albumin
fusion proteins**

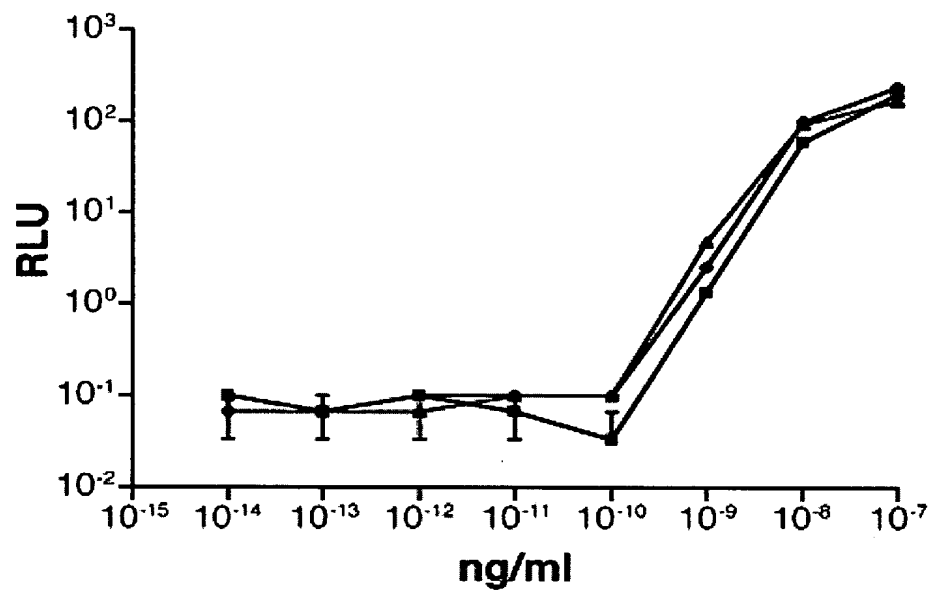


Figure 9

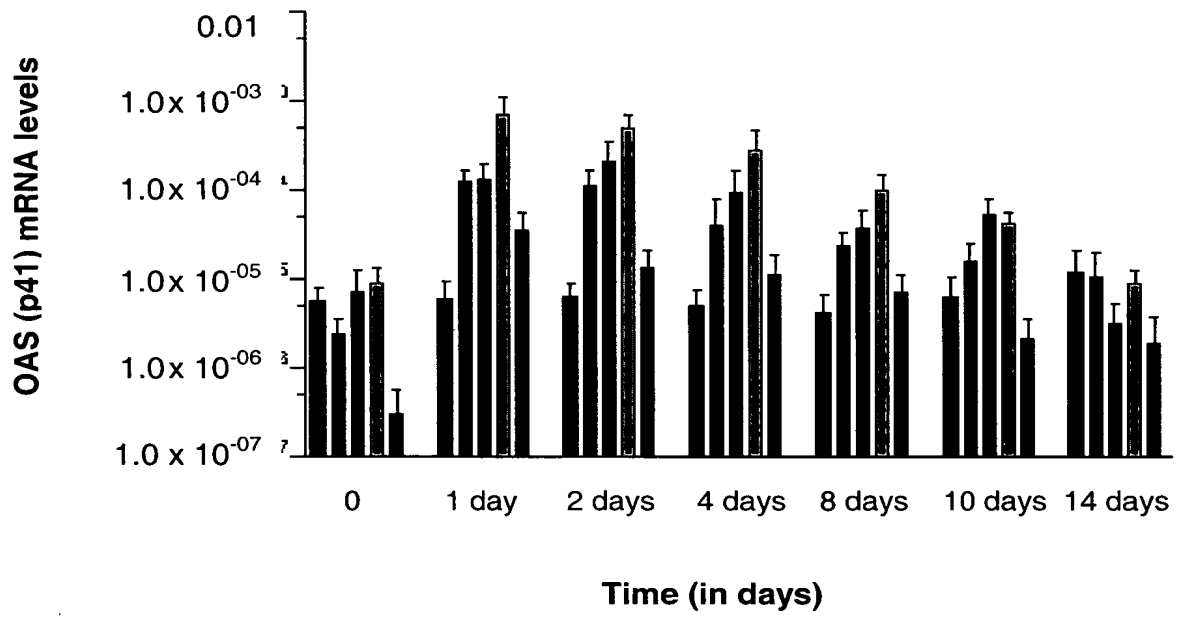


Figure 10